



# **INDRAPRASTHA** LANDMARK

2 & 4 BHK PREMIUM APARTMENTS | OFFICES | SHOPS  
Gangadham - Shatrunjay Mandir Rd, Near Shanti Nagar, Pune



**ENJOY  
COLORFUL LIFE**



**Indraprastha  
INFRA**

Indraprastha Group Since its day of inception has been synonymous with trust and reliability. our expertise has been instrumental fulfilling the dreams of our customers. We at Indraprastha Group believe in ethical business practices. Ethics that provide them more than just a Home - a complete satisfaction. in this journey so far, we have earned our customers. And more than anything, we have earned their invaluable trust.

**WE CREATE A DREAM HOME**



**INDRAPRASTHA**  
LANDMARK

Indraprastha Landmark a thoughtfully crafted state-of-the-art commercial spaces for ambitious achievers like you! It comprises of Small & large sized offices from where you could fine tune your strategies & rule the markets which will become your fast - growing areas. Designed to shower luck & fortune on you, this is the place that will inspire you to multiply your ambitions and the aim higher.



2 & 4 BHK PREMIUM APARTMENTS | OFFICES | SHOPS  
Gangadham - Shatrunjay Mandir Rd, Near Shanti Nagar, Pune



Pride is not about swelling up with egoistic attitude. it is about being humble and let the world take pride in your achievements. and deep down in your heart you are elated without being vocal.

Indraprastha landmark as a place creates that feeling of elation with its great design, quality, & Space.

STAY PROUD.  
STAY WITH PRIDE



2 & 4 BHK PREMIUM APARTMENTS | OFFICES | SHOPS  
Gangadham - Shatrunjay Mandir Rd, Near Shanti Nagar, Pune

# AMENITIES

- Club House
- Indoor Games
- Pathway
- Trellis with Seaters
- Landscape Garden
- Children's Play Area with Equipments
- Senior Citizen Seating Area
- CCTV To Common Areas
- Water Purifier
- Fire Fighting System
- Video Door Phone
- Solar Water System
- Lifts with Power Back-Up
- Entrance Gate with Security Cabin
- Power Back-Up for Common Areas
- Common Toilet in Parking Area



# CLUB HOUSE



## SPECIFICATIONS

### STRUCTURE & MASONRY

Earthquake resistant RCC Structure  
6" external walls & 6" internal walls.  
Sand Faced plaster for external & POP finished internal walls.

### KITCHEN

Granite kitchen platform with stainless steel sink.  
Provision for water purifier.  
Glazed tile dado upto lintel level above kitchen otta.

### ELECTRIFICATION

Electrical concealed copper wiring with modular switch with adequate points in all rooms.  
Ceiling Fan points in all rooms.  
Provision of Electrical exhaust fan in kitchen & toilets.  
Miniature circuits breaker (MCB).  
T.V. points in living room.  
Provision for water purifier electrical point in kitchen.  
Provision for inverter Point.  
Provision for A/C Point in Master Bedroom.  
Provision for Washing Machine point in Dry Balcony.

### FLOORING

600 mm x 600 mm vitrified flooring in all rooms  
Anti skid flooring in the terraces, dry balcony & washrooms.

### DOORS

Attractive main entrance door with both side laminate & fittings.  
Toilet & bathroom door frame in marble / granite.  
Water proof Doors for Bedrooms, Toilets & Terrace.

### PAINTINGS

Superior quality oil bond distemper for all internal walls  
External wall in waterproof Apex paint  
Oil painted M.S. safety grills.  
Oil painted M.S. Railing for Terrace.

### WASHROOMS

Designer Glazed tiles dado upto lintel height  
Ceramic flooring in all toilets.  
Concealed Internal Plumbing.  
Provision for Water Heater  
Premium quality bathroom C.P. fitting  
Premium quality bathroom sanitary ware fittings.

### WINDOWS

3 Track Powder coated aluminum sliding windows with mosquito Net  
Safety grills in all windows  
Granite / Marble window sills

OFFICES

Main Road



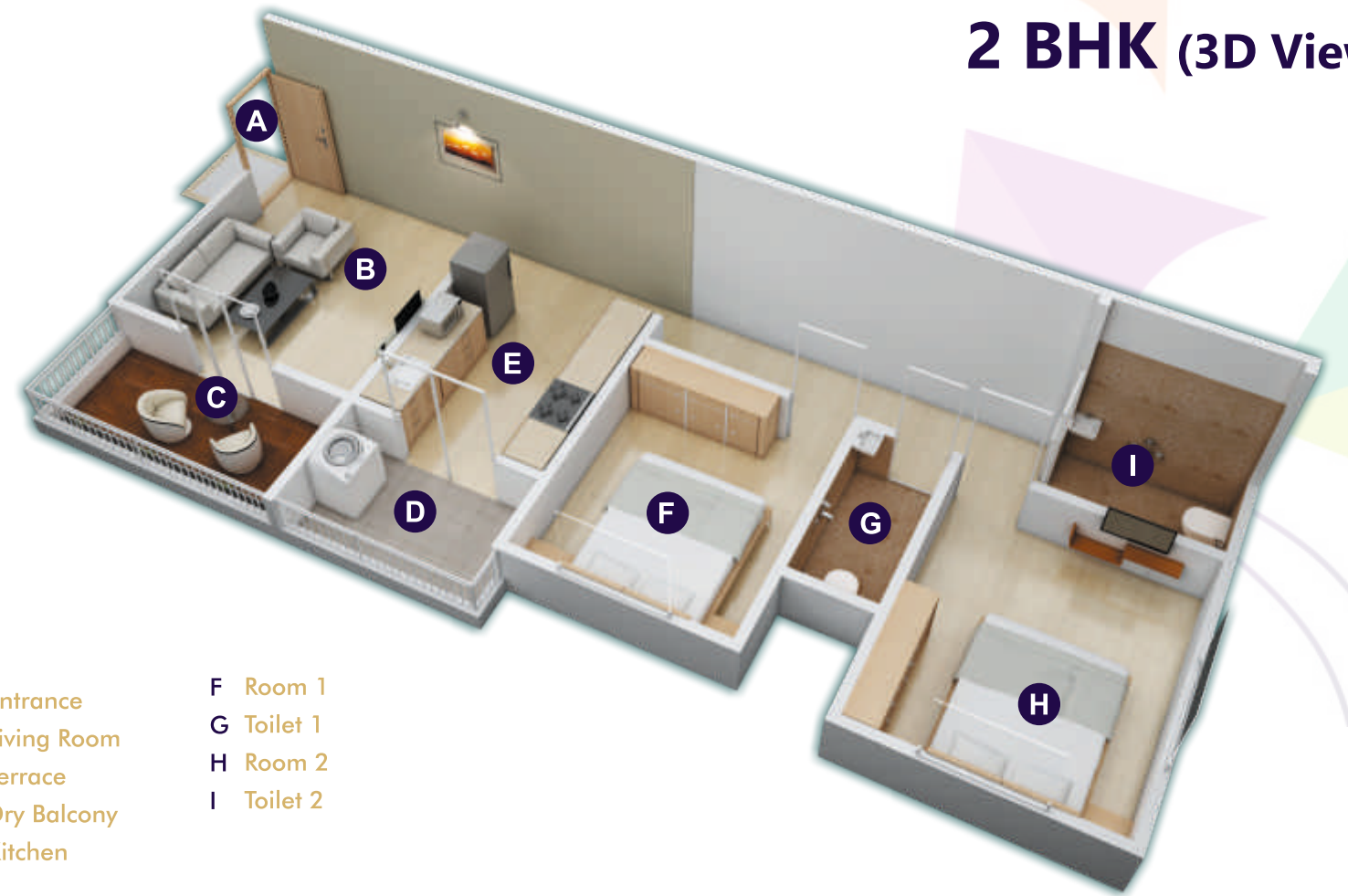
Area Statement in Sq. Ft.

OFFICE NO.	CARPET	CODE
01	376	545
02	338	490
03	338	490
04	338	490
05	465	674
06	478	693



COMMERCIAL OFFICES  
1<sup>ST</sup> TO 4<sup>TH</sup> FLOOR PLAN

2 BHK (3D View)



- A Entrance
- B Living Room
- C Terrace
- D Dry Balcony
- E Kitchen
- F Room 1
- G Toilet 1
- H Room 2
- I Toilet 2

Note : \* This Cut Section only Artistic Impression for Promotional Purposes

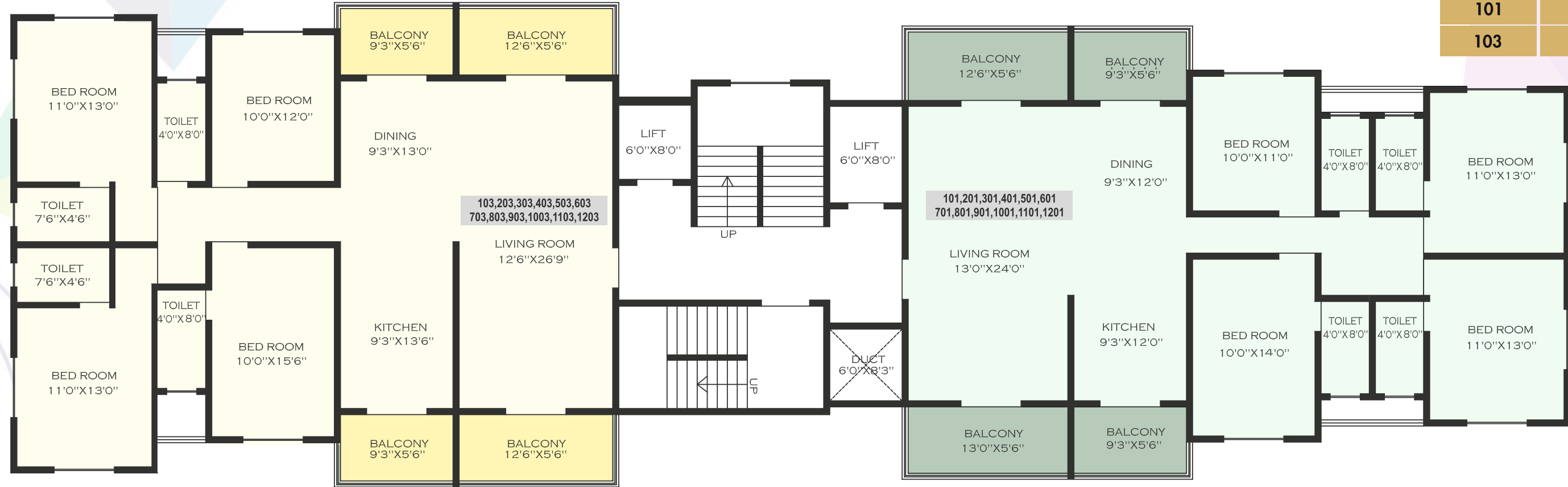
4 BHK (3D View)



- A Entrance Lobby
- B Living Room
- C Dining
- D Terrace
- E Dry Balcony
- F Kitchen
- G Room 1
- H Toilet 1
- I Room 2
- J Toilet 2
- K Toilet 3
- L Room 3
- M Common Toilet
- N Kids Room
- O Terrace
- P Terrace

# 1<sup>ST</sup> To 12<sup>TH</sup> FLOOR PLAN

Road Side



## 4 BHK FLAT OPTIONS

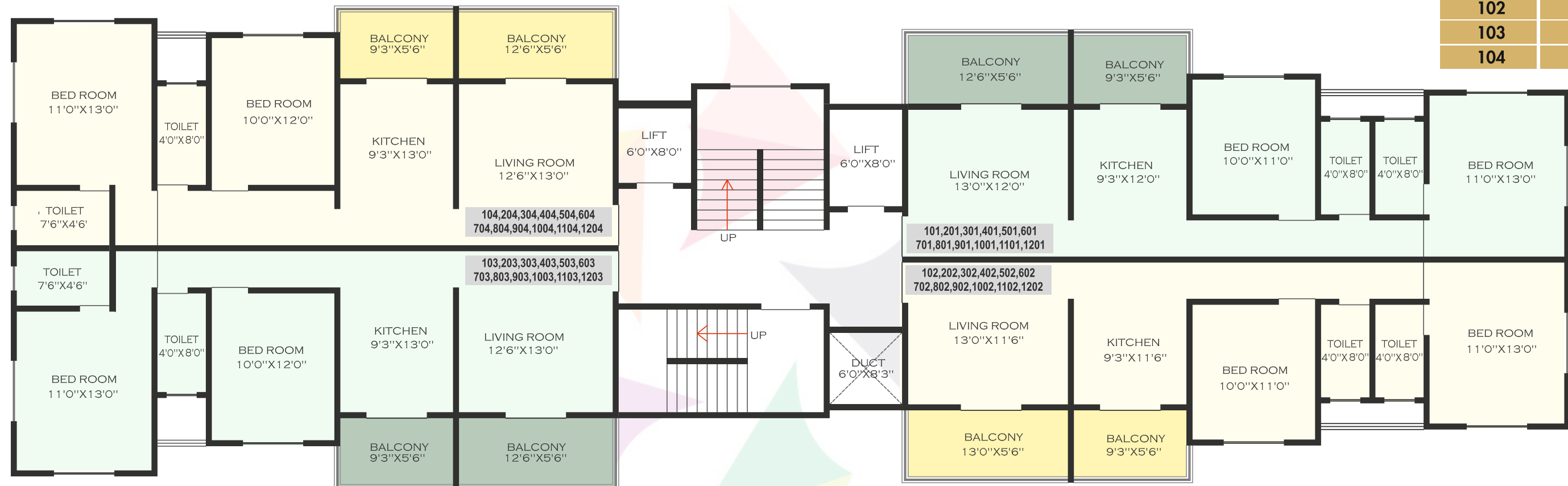
Area Statement in Sq. Ft.

FLAT NO	CARPET	CODE
101	1556	2100
103	1645	2221



# 1<sup>ST</sup> To 12<sup>TH</sup> FLOOR PLAN

Road Side



## 2 BHK FLAT OPTIONS

Area Statement in Sq. Ft.

FLAT NO	CARPET	CODE
101	774	1045
102	763	1030
103	804	1085
104	826	1115





**INDRAPRASTHA  
LANDMARK**

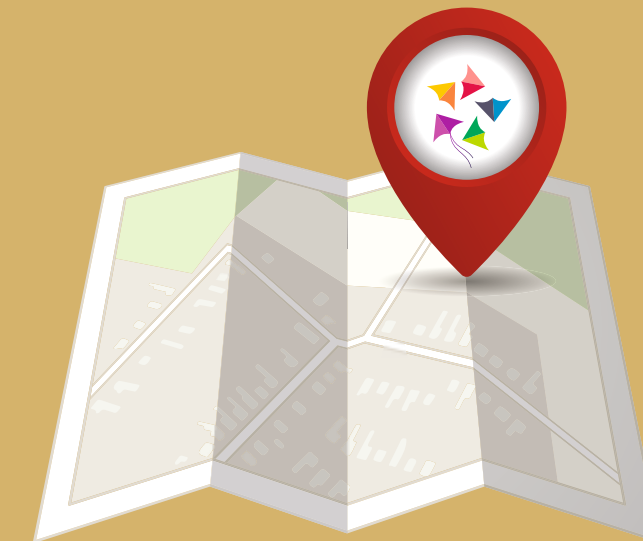
**OUTSHINE OTHERS.  
OUTSHINE CLASS.**





## EXCELLENT CONNECTIVITY

The Convenience of being within the city, but sheltered from it's congestion right next door to Marketyard, Indraprastha Landmark is within a few minutes' drive from excellent Schools, Colleges, Hotels, Markets, Temples, access to the Katraj - Kondhwa road, Pune - Mumbai Expressway via Katraj, and the Pune - Solapur highway, main street and fine Dining & Shopping outlets.



## THE RISING LOCATION

### LOCATION MAP IN VICINITY

• Temples	5 Mins	• Highway	5 Mins	• Market	5 Mins
• School	5 Mins	• Petrol Pumps	5 Mins	• Police Station	5 Mins
• Hotels	5 Mins	• D-Mart	5 Mins	• Entertainment	15 Mins
• Hospitals	5 Mins	• ATM	5 Mins	• Pune Railway Station	20 Mins
• Banks	5 Mins	• Garden	5 Mins	• Pune Airport	30 Mins

#### TEMPLES

- Shatrunjay Temple
- Durga Mata Mandir
- Shantinagar Jain Temple
- Iskcon Temple
- Ashapura Mata Mandir

#### HOTELS

- Kanha Hotel
- Hotel Srinidhi
- Hotel Gokul
- Hotel Gangotri
- Sliver Plate

#### HOSPITALS

- Chordiya Hospital
- Dhadiwal Polyclinic
- Sai Hospital
- Shivshambhu Hospital
- Chintamani Hospital

## OUR CREATIONS

### ONGOING PROJECTS



**1 & 2 BHK APARTMENTS & SHOPS**  
YEWALEWADI - KONDHWA LINK ROAD  
NEAR ISCKON TEMPLE, KONDHWA BK.



**ARIHANT GALAXY**

**1 & 2 BHK APARTMENTS  
& SHOPS**

**YEWALEWADI - KONDHWA  
LINK ROAD, NEAR ISCKON TEMPLE,  
KONDHWA BK.**

### COMPLETED PROJECTS



**1 & 2 BHK APARTMENTS & SHOPS**  
TILEKAR NAGAR, BEHIND ISCKON TEMPLE,  
KONDHWA (BK)



**2 BHK APARTMENTS & SHOPS**  
YEWALEWADI - KONDHWA LINK ROAD  
NEAR ISCKON TEMPLE, KONDHWA BK.

### CREDITS

#### Architect

Dhere Associates  
+91 93258 19171

#### Legal Advisor

Adv. Rajesh R Khaladkar  
+91 99214 08282

#### RCC Consultant

Shishir Dhawade

#### Construction Partner

Pentagon Promoters & Developers  
+91 98220 72786

#### Brand & Design Consultant

Namo Design  
Ketan Shrishrimal  
+91 99224 47824



Maharera No : P52100022668  
maharera.mahaonline.gov.in

### DISCLAIMER

"The contents of this brochure are for general information Purposes only and does not constitute advice. The imagery used in the brochure is indicative of style only, the photographs of the surrounding views and location may have been digitally enhanced or altered and do not represent actual views or surrounding views; these photographs are indicative only. Changes may be made during the development. Dimensions, fittings and specifications are subject to change without notice. Fittings and finishes are subject to availability and vendor discretion. The information contained herein is believed to be correct but is not guaranteed. All statements and information made in this brochure or by the Promoter are for information purposes only and completely without obligation. The colours of the buildings are indicative only. This brochure is a guide only and does not constitute an offer or contract. Publishing of information contained herein is expressly prohibited. This disclaimer is to be considered as part of the descriptions and information given in this brochure. If any individual or collective part or formulation of this text does not at all, or partially or completely correspond to what is legally required, the content and validity of the remaining parts of the document remain legally unaffected."

A Project By



**Indraprastha**

**INFRA**

WE CREATE A DREAM HOME



**CHORDIYA'S**  
VENTURES  
PROMISE OF LIFETIME

Office Address : Sr. No 65A, Gangadham - Shatrunjay Mandir Road,  
Near Shantinagar, Kondhwa Bk., Pune - 411 048

Call : +91 8804 27 8804 / 8804 28 8804 | Email : [info.indraprasthainfra@gmail.com](mailto:info.indraprasthainfra@gmail.com)